

# MapKey

## DESKTOP-GIS

**Why?** Numerous tasks of public authorities and the private sector using spatial data could be supported beneficially with the application of a GIS. Ordinary desktop applications with their highly complex user interfaces are often too confusing and costly for the GIS-novice or the more practically oriented user. The usual free-of-charge GIS viewer on the other hand offer isolated systems that cannot be upgraded and are without a chance of a direct data exchange with higher-scaled GIS applications.

Now, with MapKey, an easy-to-use, competitive Desktop-GIS was developed that, with ArcGIS Engine as its technological basis, is completely integrated into the ESRI ArcGIS Framework – but may be extended with various applications and extensions to a premium GIS workplace exactly answering your demands.

### MapKey (Version 9.2) offers:

- Complete integration into the ArcGIS Framework
- Applicability of the ESRI standard formats throughout (MXD, Shape, Geodatabase, DXF and DWG, all usual raster formats, ArcIMS map services, WMS Services ...); Loading of all supported formats with MapKey directly.
- Comprehensive creation of new map documents; application and adaptation of highly complex map documents that were created with higher scaled ArcGIS products (ArcView, ArcEditor, ArcInfo)
- Direct exchange of map documents between ArcMap and MapKey, which means that changes carried out with MapKey are visible in ArcMap and vice versa.

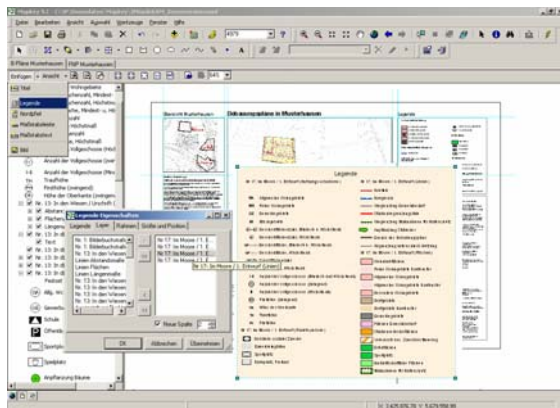
				<b>ArcEditor</b>	<b>ArcInfo</b>
<b>ArcReader</b>	<b>MapReader</b>	<b>MapKey</b>	<b>ArcView</b>	<b>High End Desktop GIS ArcView +</b>	<b>Complete ESRI Desktop GIS ArcEditor +</b>
<ul style="list-style-type: none"> <li>• Read only mapping</li> <li>• No application methods</li> </ul>	<b>ArcReader +</b> <ul style="list-style-type: none"> <li>• Drawings and measures (temporarily)</li> <li>• Editing of attribute data</li> <li>• Application methods</li> </ul>	<b>Light Desktop GIS</b> <ul style="list-style-type: none"> <li>• Creating and editing maps</li> <li>• Editing geodata</li> <li>• GIS analysis</li> </ul>	<b>Complex Desktop GIS:</b> <ul style="list-style-type: none"> <li>• Create and edit complex symbology</li> <li>• Comprehensive GIS tools</li> <li>• Basic geoprocessing</li> </ul>	<ul style="list-style-type: none"> <li>• Administration ArcSDE</li> <li>• Multi-User editing</li> <li>• Versioning</li> <li>• Topology + networks</li> <li>• Dimensioning</li> <li>• Representations</li> <li>• Additional geoprocessing tools</li> <li>• ...</li> </ul>	<ul style="list-style-type: none"> <li>• Komplex GIS-analysis</li> <li>• Comprehensive geoprocessing</li> <li>• Geoprocessing server</li> <li>• ArcInfo Workstation</li> <li>• ...</li> </ul>
<b>File format pmf:</b> Read-only map documents generated by ArcGIS Publisher		<b>File format mxd:</b> Map documents may be created and edited by each product mentioned above.			

## Map Analysis and Information

- Indication and creation of hyperlinks
- Extensive search functions
- Precise measurement of area, distance, coordinates with snapping functions
- Export of the map to image file or PDF
- Spatial bookmarks
- Printing

## Active Map Design:

- Style-Manager for the administration and application of highly complex symbology.
- Extended options for defining the representation of geodata by editing the layer symbology.
- Definition of the scale range of layers (visibility within various scales)
- Automatic labeling of features with an extensive range of setting options for the label text and his placement.
- Creation and editing of free graphics and texts in the map as well as in the layout.
- Creation of dynamic legends in the layout with a detailed range of settings (e.g. layers to be displayed, number of columns and placing of column make-ups).
- Application of further map elements such as north arrow, scale bars, images and so on in the layout.
- Comprehensive tools for aligning map elements vertically or with a raster / guides in the layout.



## Editing of Geodata

- New, high-quality editor with extensive construction tools (e.g. create perpendicular line, parallels, define length and angle etc.) with various setting options regarding snapping properties and snap layers.
- Creation of new geodata such as shape files and feature classes in a file geodatabase
- Editing of attribute values of one or more rows simultaneously
- Adding and deleting of fields in tables

## Tables

- Support of stand-alone tables (dBase, Geodatabase, CSV, Excel-Tables)
- Creation of joins between tables

## Extendability

- Integrated interface IP FLink for a bi-directional connection to other applications
- Optional extensions (e.g. IP Dimensioning, IP Layout Manager, IP Xtra) by IP SYSCON and other ESRI partners as well.

